

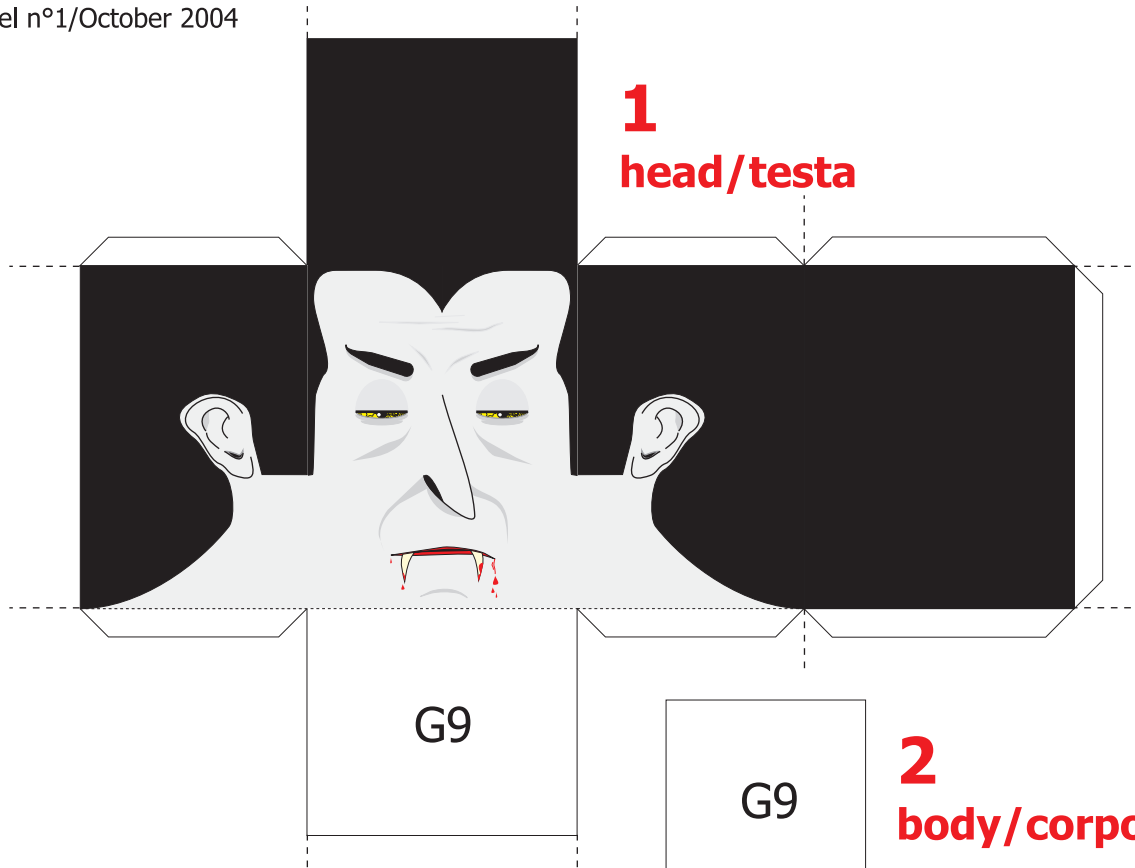


A hako-model
by

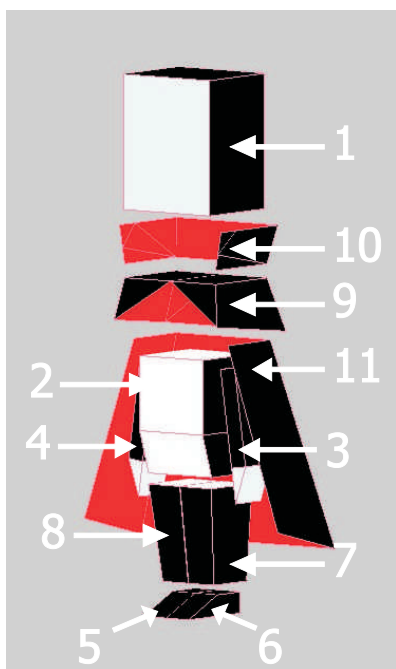


Copyright © 2004 paperPino
All rights reserved

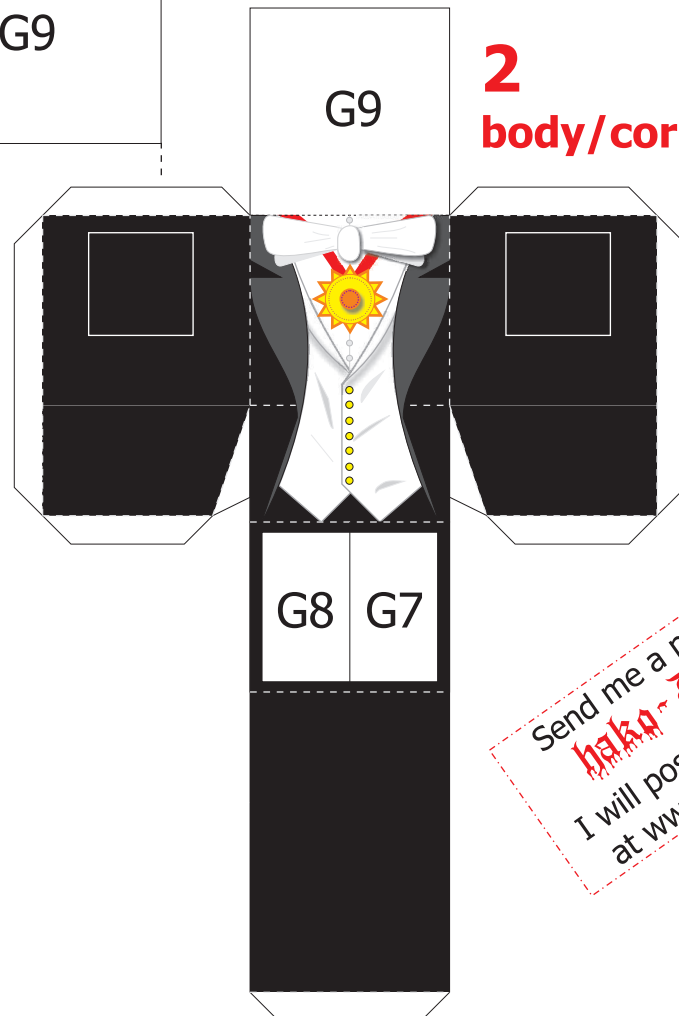
hako-model n°1/October 2004



hako=box
The hako-models are stylized paper characters, easy to build, and funny to collect...



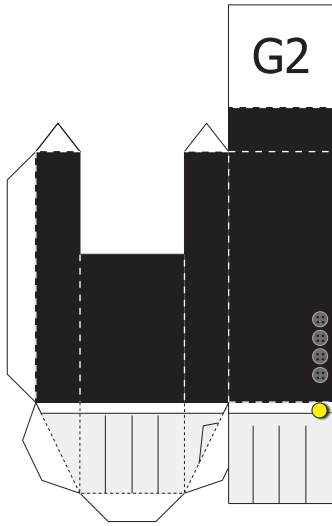
Glue pieces 2-8 and assemble.
Glue pieces 9-11 and assemble.
Glue the head 1.
Assemble all together.



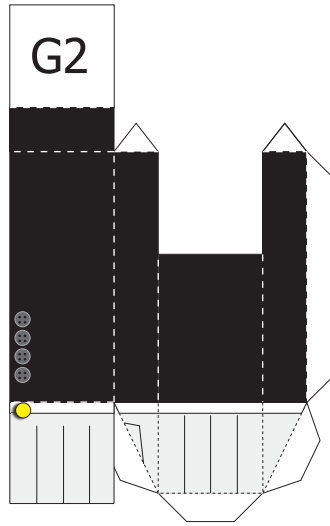
Send me a photo of your
hako Dracula
I will post it on my website
at www.paperpino.net !!!



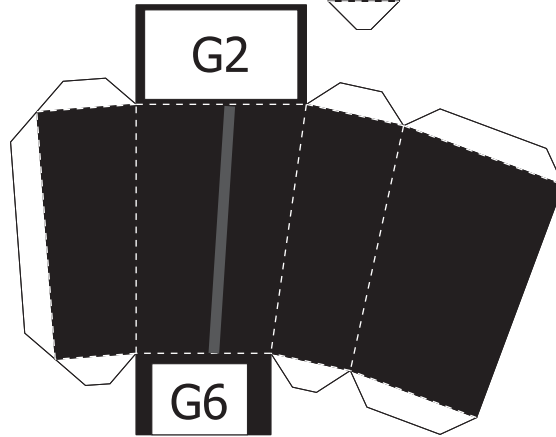
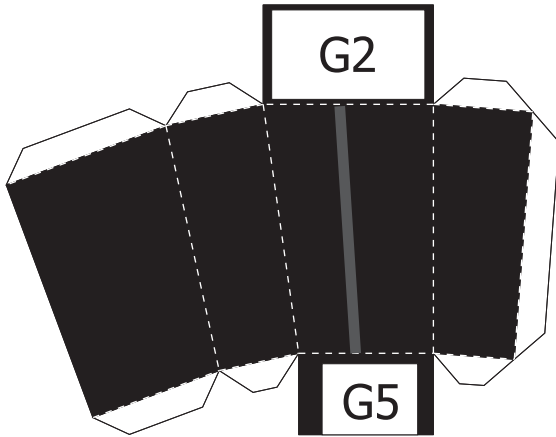
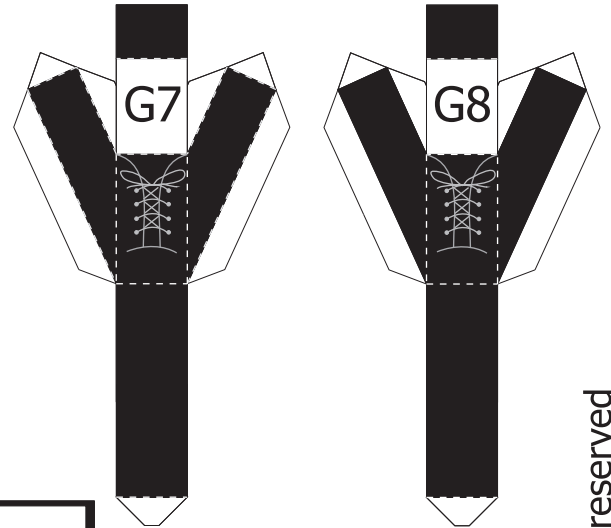
3 - left arm
braccio sinistro



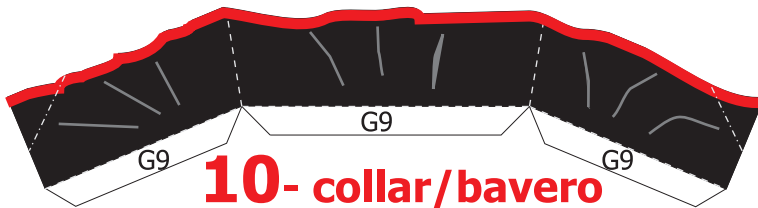
4 - right arm
braccio destro



5- shoes -6

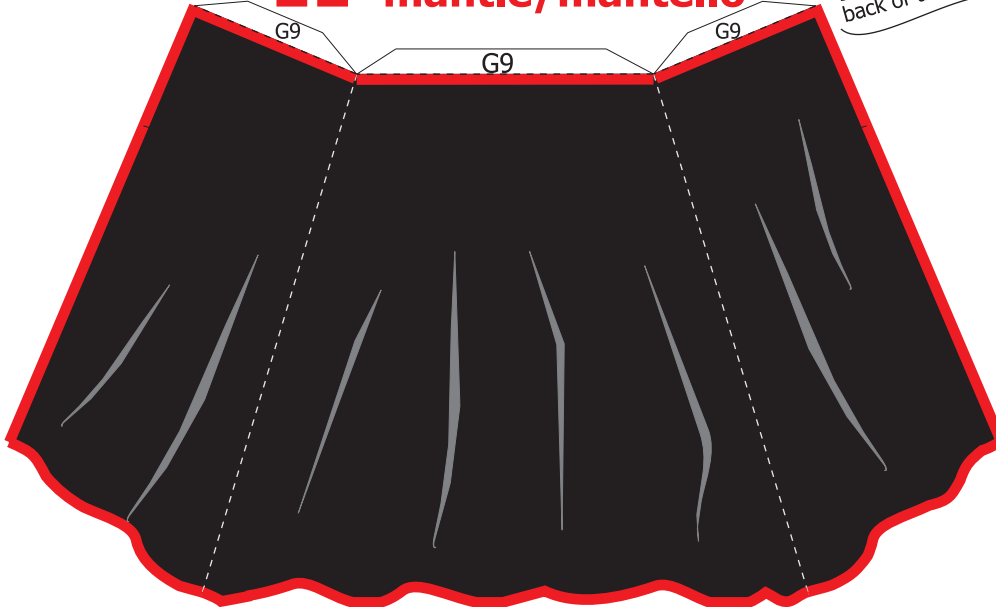


7- left leg/gamba sinistra **8- right leg/gamba destra**

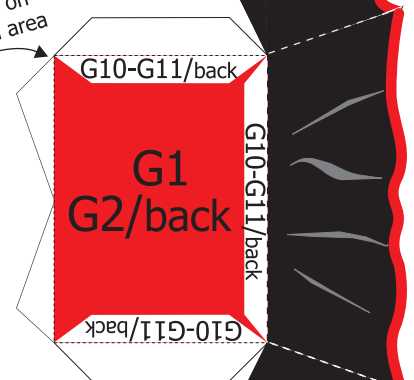


10- collar/bavero

11- mantle/mantello



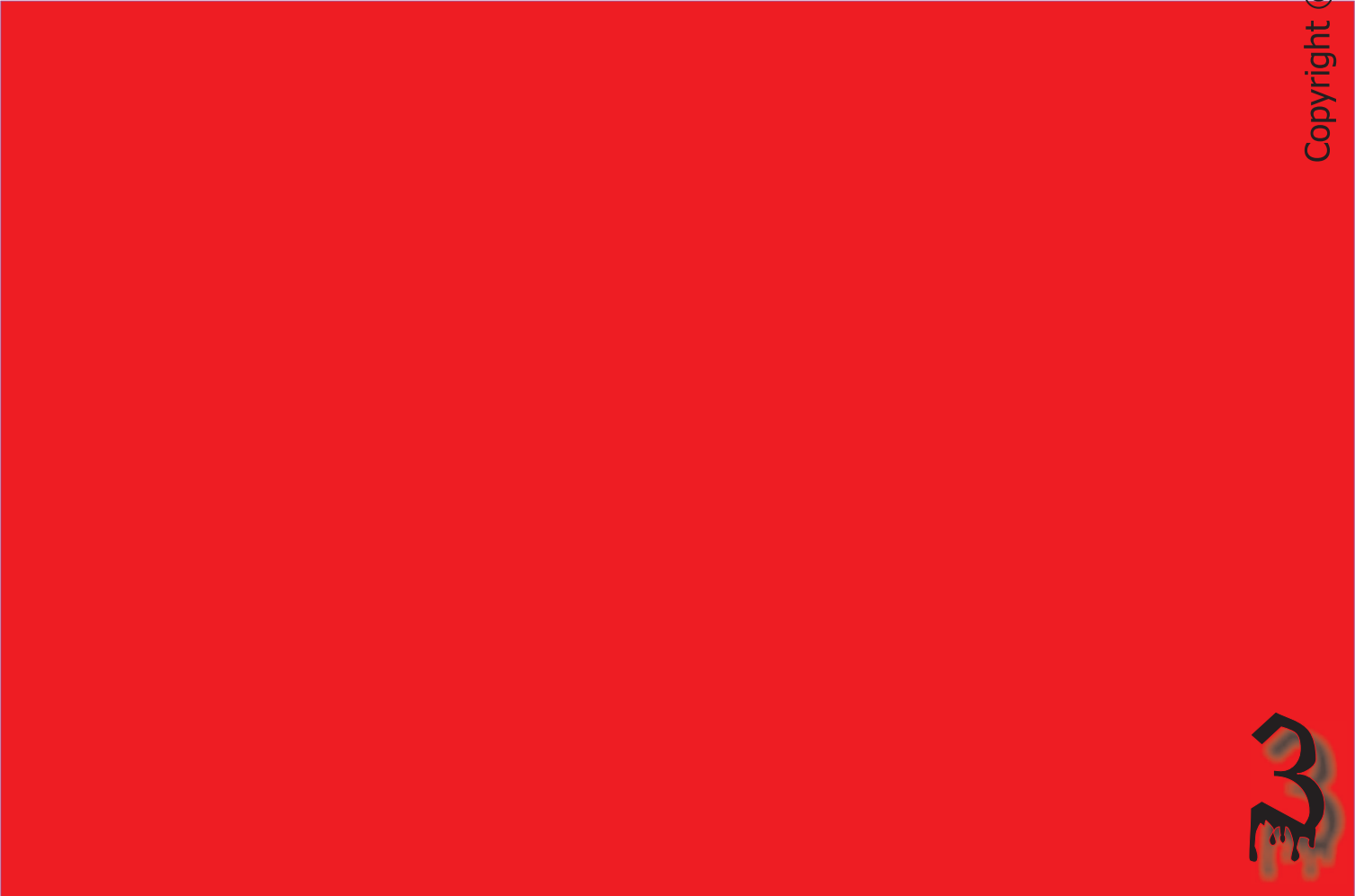
glue the mantle on
back of the red area



9- cape/cappa



print back of page 2



Copyright © 2004 paperPino. All rights reserved

