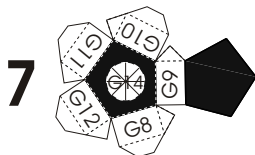
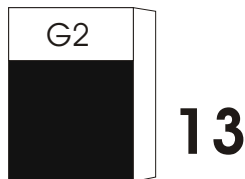
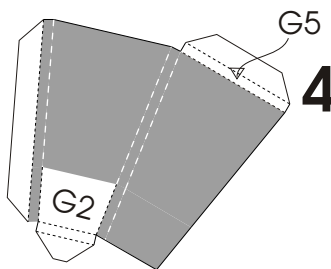
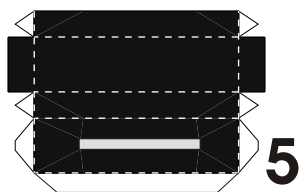
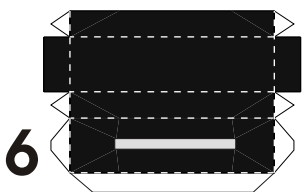
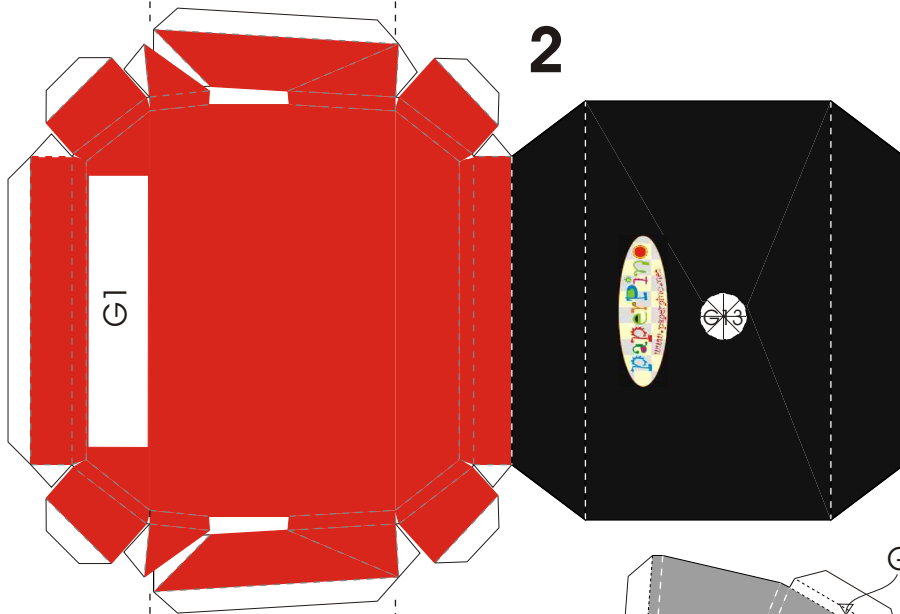
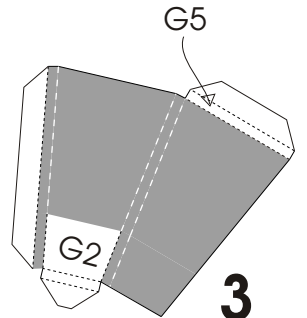
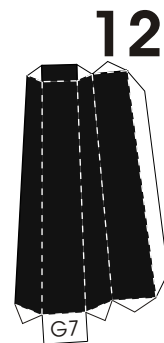
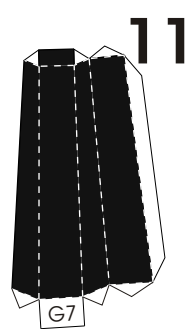
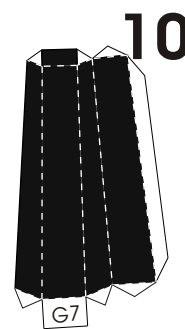
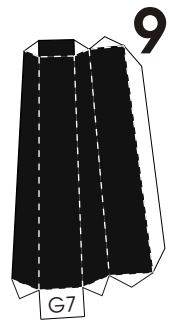
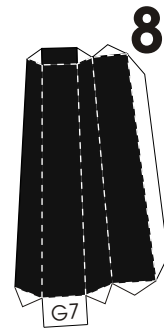
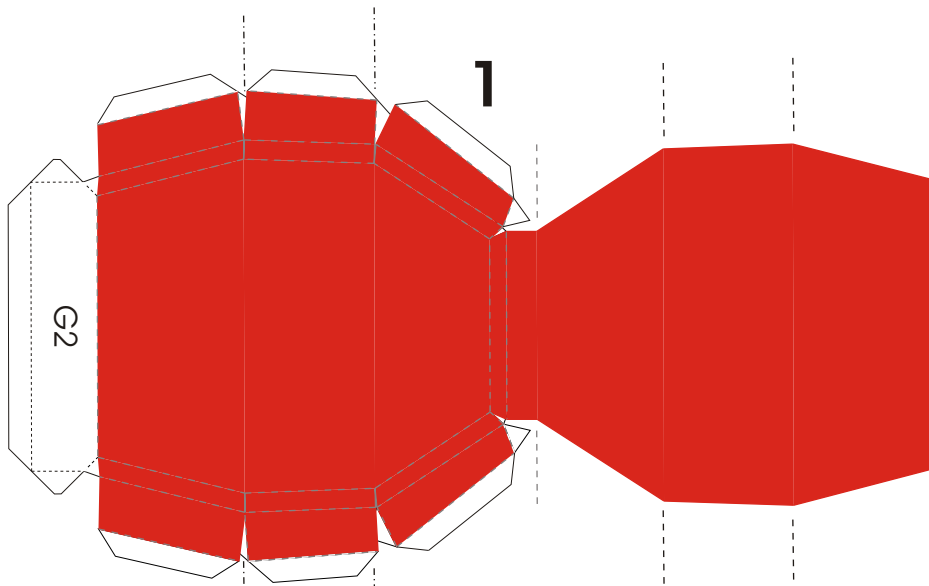
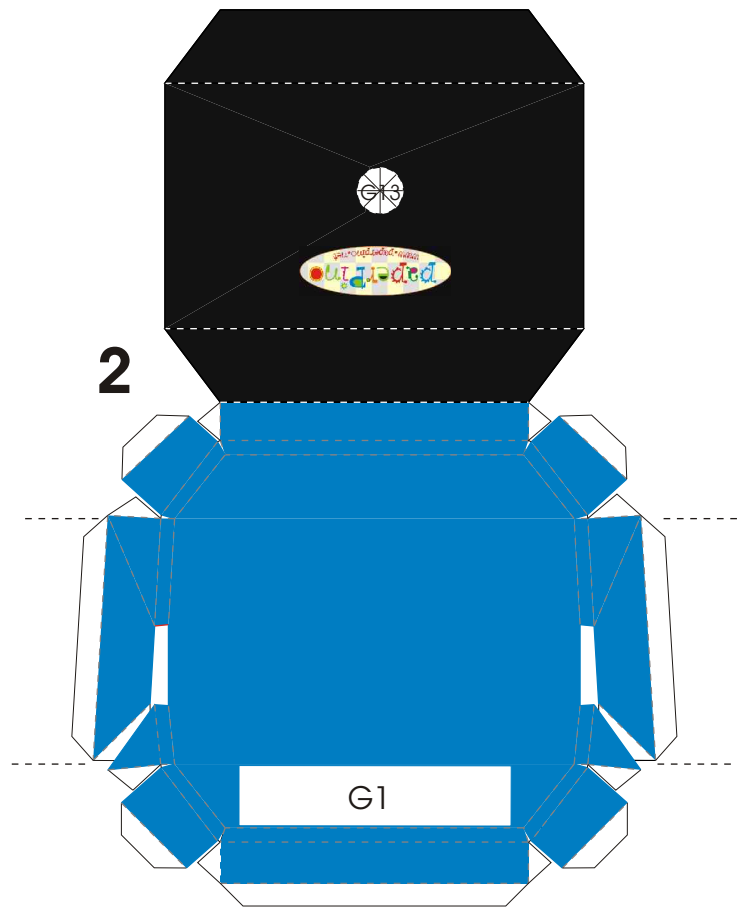
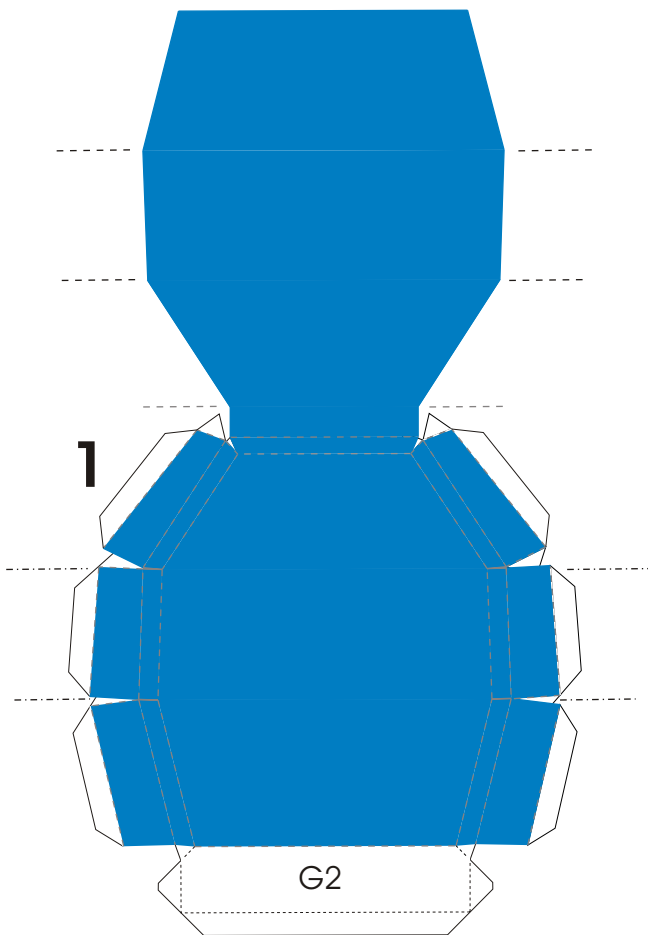


# Office Chair





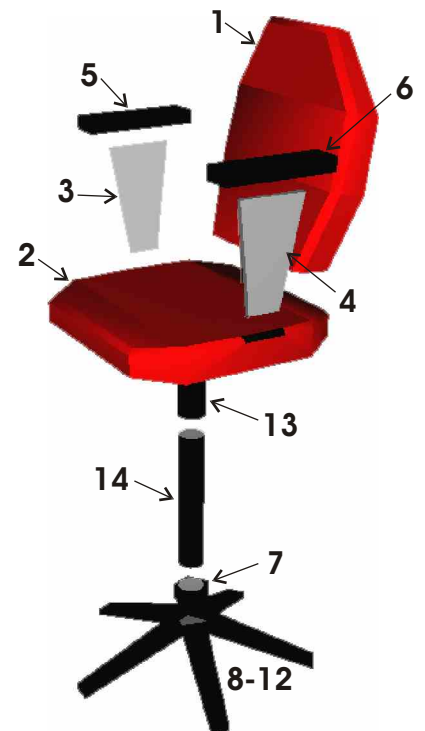
## INSTRUCTIONS

----- convex fold ("hill")

----- concave fold ("valley")

Glue pieces 1 and 2. Assemble together. Assemble the two arms inserting pieces 3 and 4 into slot of 5 and 6, respectively. Insert and glue 3 and 4 into lateral slots of 2. Glue the base support 7 and the legs 8-12. Assemble together. Glue the cylindrical supports 13 and 14. Allow 14 to enter and rotate into 13. Glue 13 to 2 (cut the "slice" flaps and glue). Glue 14 to 7, as before. Let dry very well after any step. Insert 14 into 13.

**Your Office Chair is now ready!**



I, Giuseppe (Pino) Civitarese, hold the sole copyright to each of my model designs and any images thereof on my site ([www.paperpino.net](http://www.paperpino.net)), but hereby grant permission for their free use for any legitimate non-profit purpose, so long as the copyright and attribution included in each model's file(s) remains intact and unmodified.

Office Chair is a paper model derived from a modified 3D model freely available at Amazing 3D Graphics, Inc. (<http://www.amazing3d.com>).