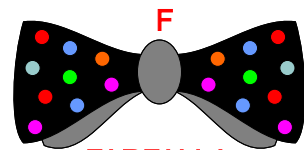
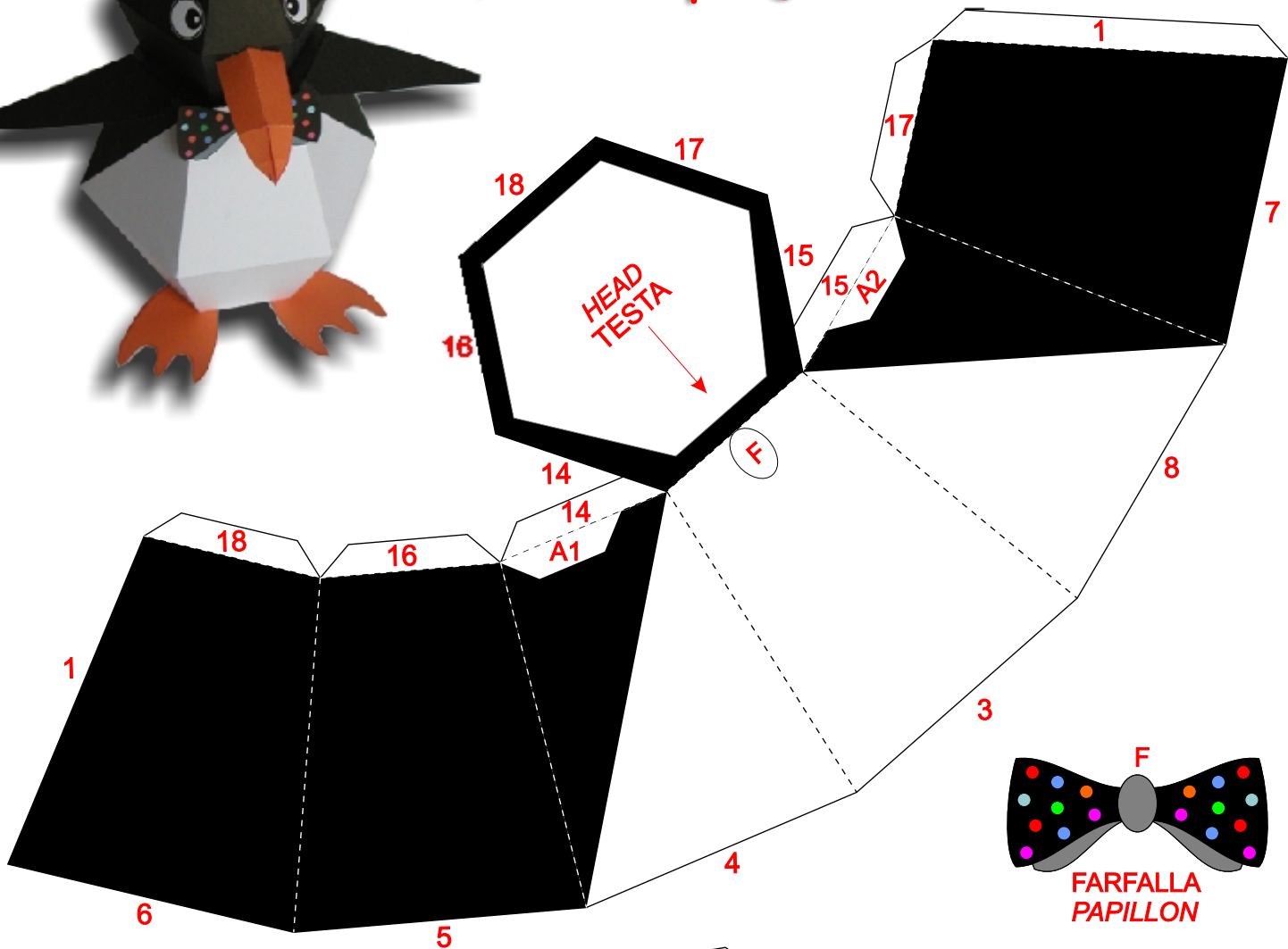
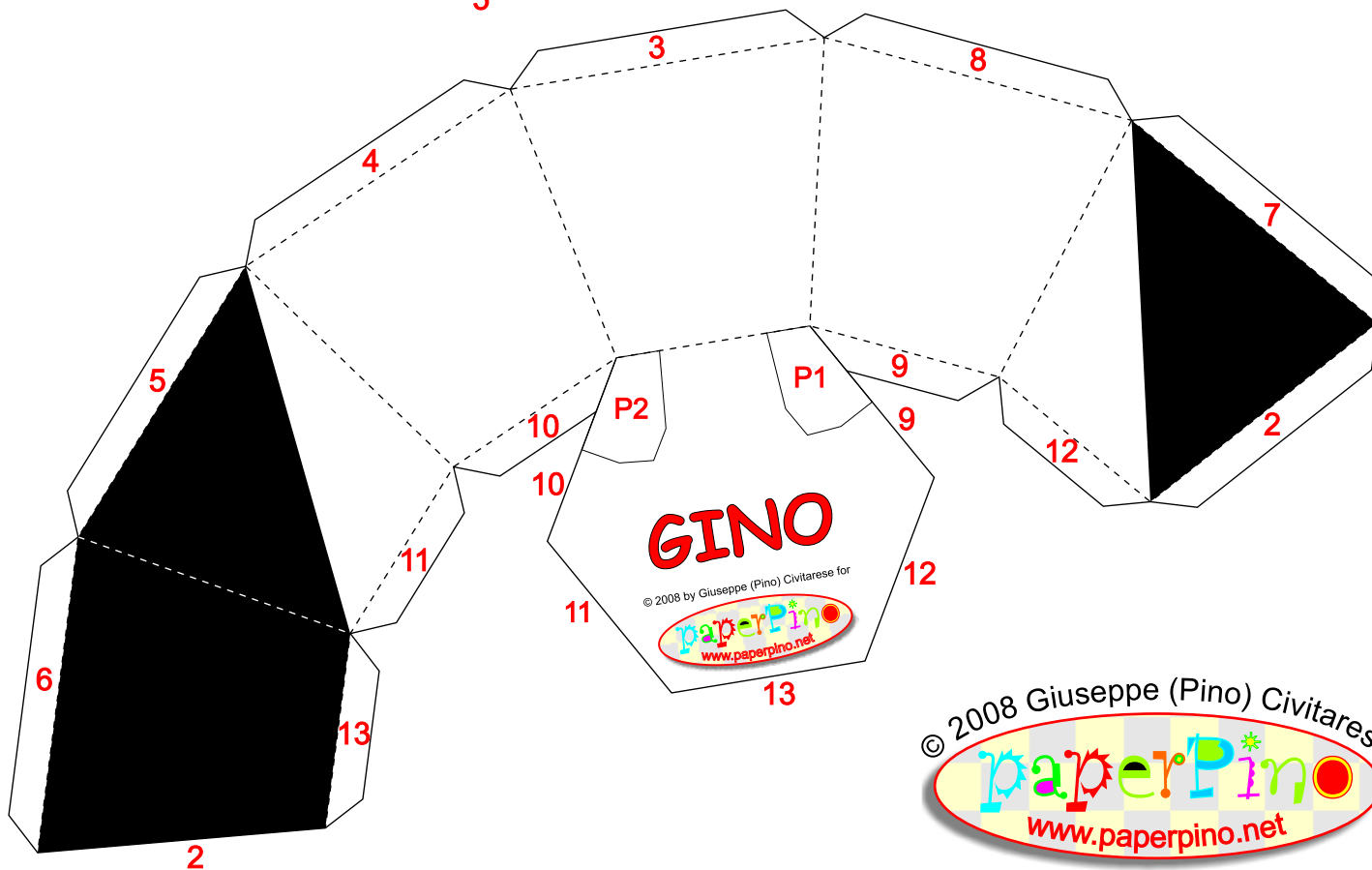
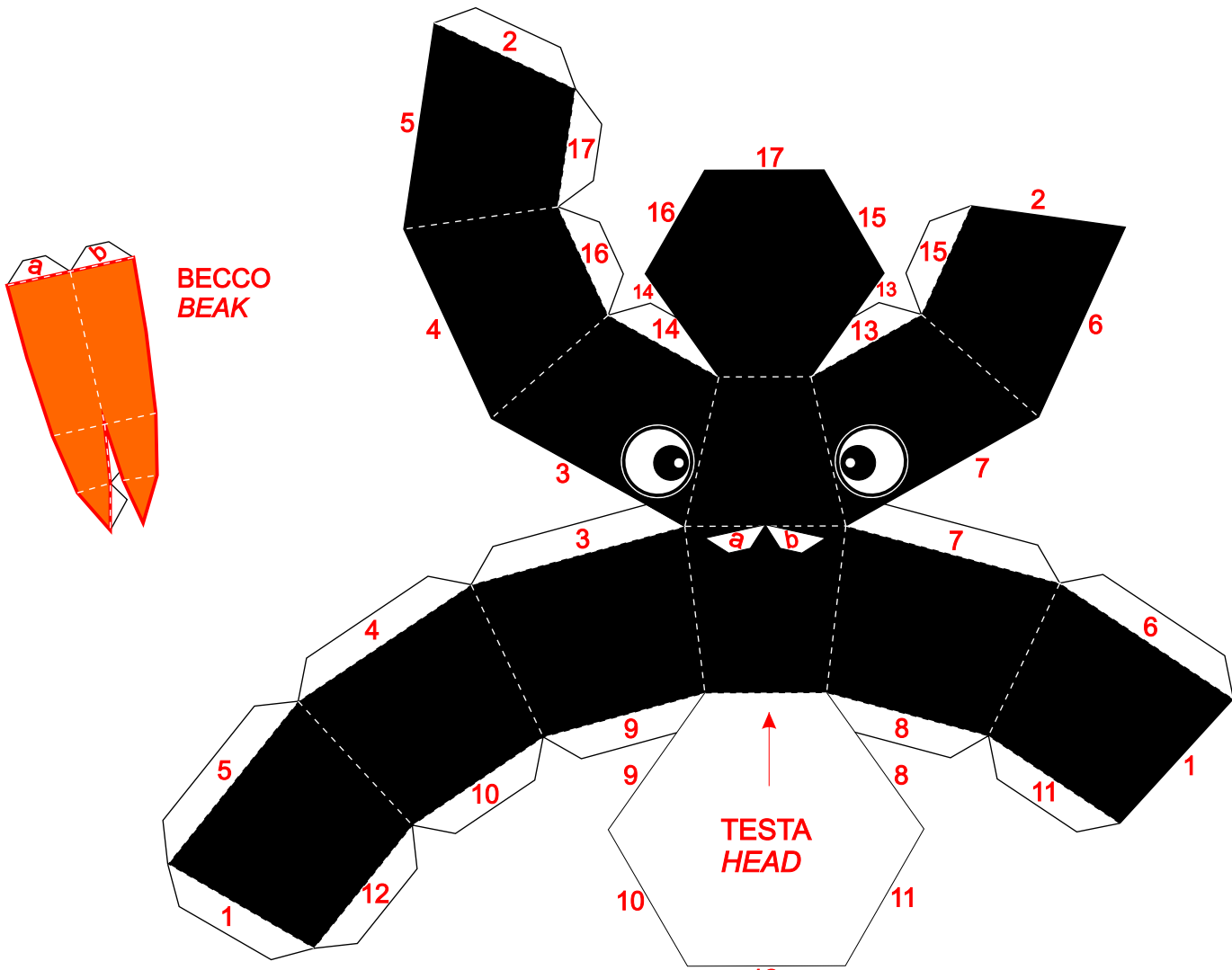


# GINO il pinguino (GINO the penguin)



FARFALLA  
PAPILLON





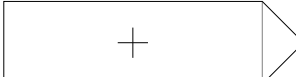
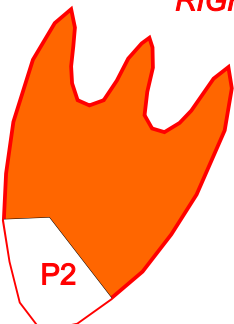
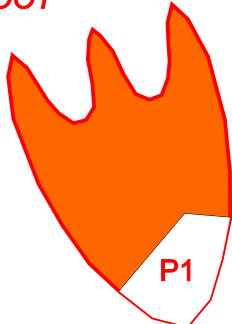
**BECCO  
BEAK**

**PIEDE SINISTRO  
LEFT FOOT**

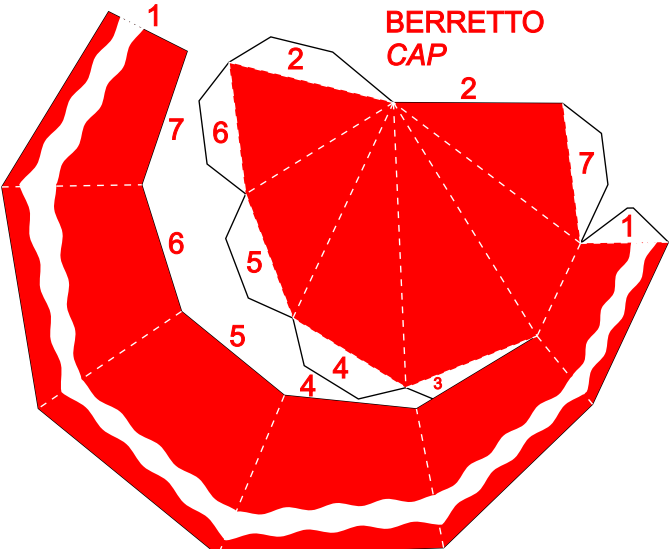
**PIEDE DESTRO  
RIGHT FOOT**

**PON PON**

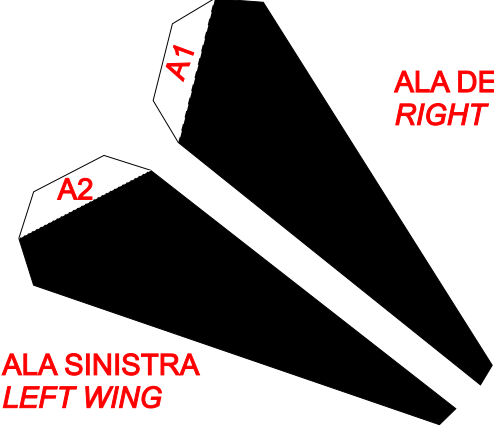
taglia la croce ed incolla  
sulla punta del berretto  
cut the cross lines and glue  
on the cap tip



**BERRETTO  
CAP**

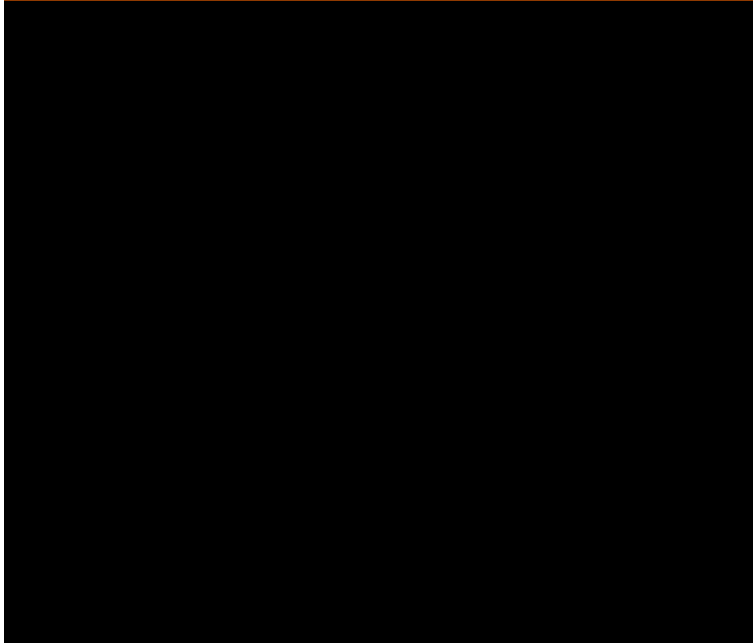


**ALA DESTRA  
RIGHT WING**



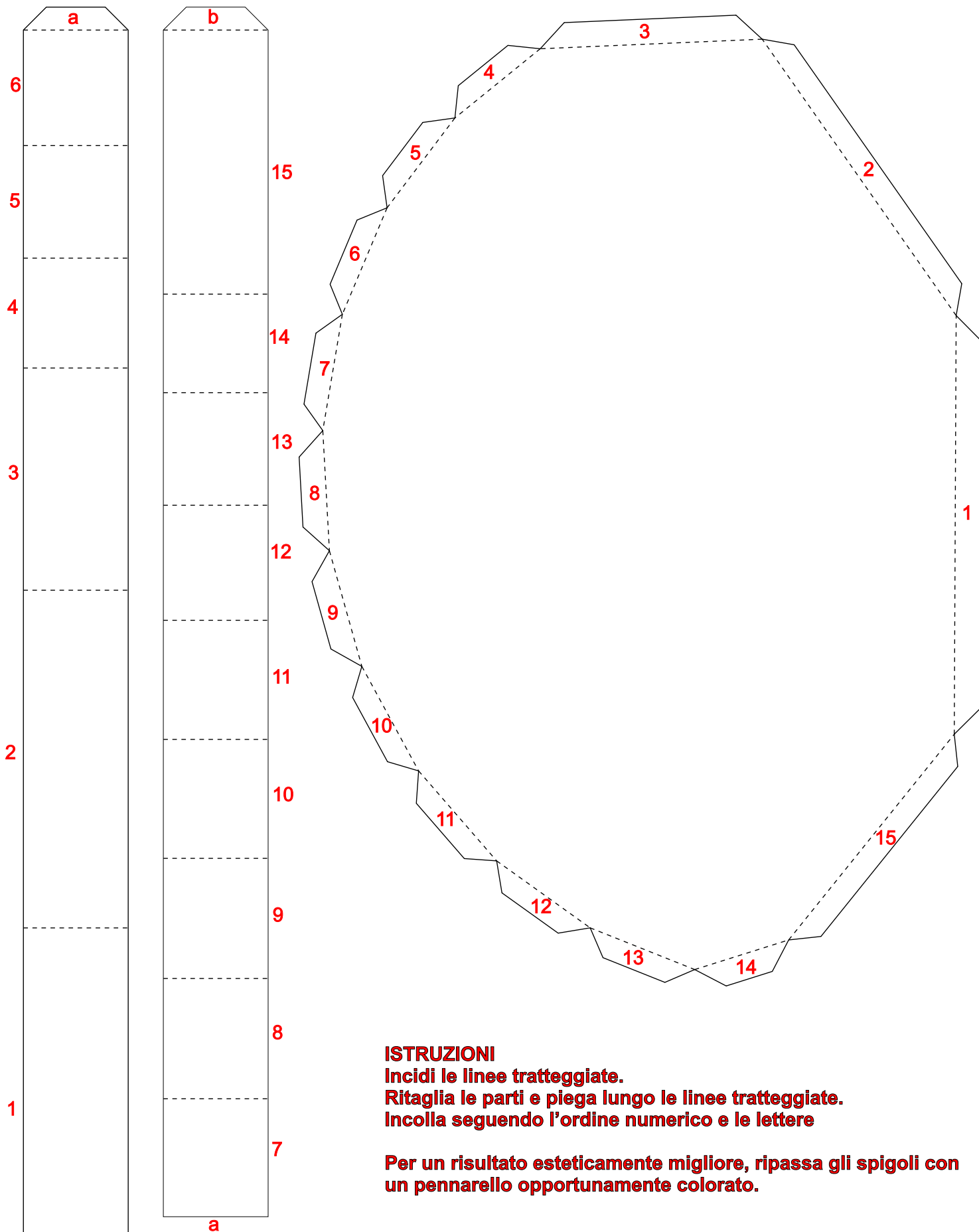
**ALA SINISTRA  
LEFT WING**

**ATTENZIONE:** stampa la pagina seguente sul retro di questa. **ATTENTION:** print the next page on back



**ATTENZIONE:**  
retro della pagina precedente

**ATTENTION:**  
*this is the back of the previous page*



**ISTRUZIONI**

**Incidi le linee tratteggiate.**

**Ritaglia le parti e piega lungo le linee tratteggiate.**

**Incolla seguendo l'ordine numerico e le lettere**

**Per un risultato esteticamente migliore, ripassa gli spigoli con un pennarello opportunamente colorato.**

**INSTRUCTIONS**

**Score along the broken lines.**

**Cutout the parts and fold along the broken lines.**

**Glue following the numerical order and the letters.**

**For better result, color the edges with a proper crayon.**